



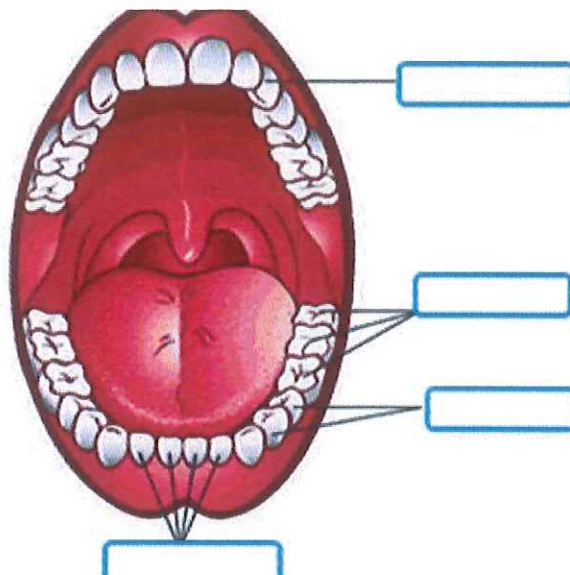
**Class: VII**

**Subject: Science**

Blocks 2,5,13,14,15,20,22,25,29

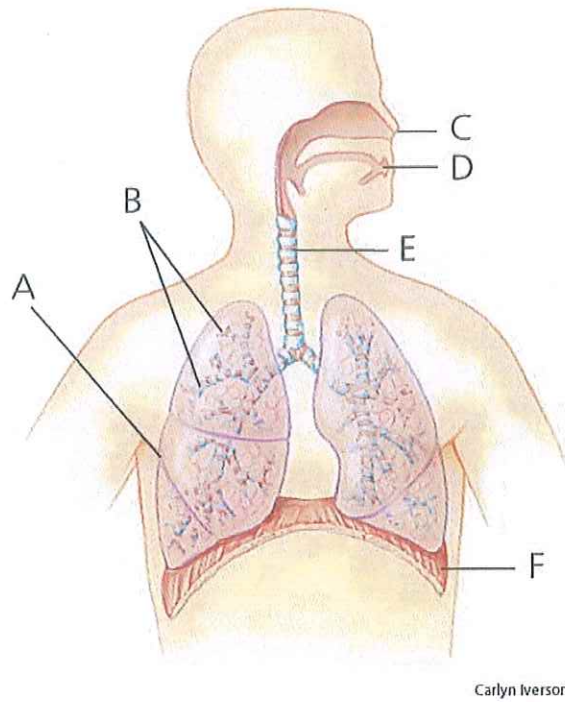
---

1. Name the largest gland in the human body.
2. State the differences between laboratory thermometer and clinical thermometer.
3. Identify the acid and base in the salt: (a) Sodium sulphate  
(b) Potassium chloride
4. How is a pulmonary artery different from other arteries?
5. Show diagrammatically, how more than one cell can be arranged in a circuit.
6. A car travels a distance of 224 kilometers in 7 hours. Calculate the speed of the car in Km/h and m/s.
7. Why do we use symbols for electrical components?
8. Why can't we feel the pulse at all parts of our body?
9. Label the following diagram:



10. Why is the word AMBULANCE written laterally inverted on the vehicle?

11. With the help of a flow chart, show the parts / organs involved in the human digestive system?
12. (a) What are salts?  
(b) Give an example for acidic and basic salt?
13. Evaporation results in cooling. Justify?
14. What is the importance of aeration in a sewage treatment plant?
15. What are the functions of red blood cells and white blood cells in our body?
16. What is rumination?
17. Sam takes 15 seconds to reach the post office from his house on a rickshaw. If the speed of the rickshaw is 2m/s, calculate the distance between his house and the post office?
18. What is the function of capillaries in our body?
19. Name the mode of ingestion in ant and mosquito.
20. Explain the function of cell in an electric circuit.
21. Why do we get muscle cramps after heavy exercise?
22. Differentiate between uniform speed and average speed.
23. (a) Untreated human excreta are a health hazard. Justify the statement.  
(b) What is sludge? How is it used in a sewage treatment plant?
24. (a) Differentiate between real and virtual image.  
(b) Why convex mirrors are preferred as rear view mirrors in vehicles?
25. (a) Veins have thinner walls compared to the arteries. Give reason.  
(b) What happens if there are no platelets in the blood?
26. (a) Identify the parts labeled as A, B, C, D, E and F in the following diagram:



(b) What is assimilation?

**27. Multiple choice questions:**

i. Saliva helps in the digestion of

- a. Starch
- b. Fats
- c. Proteins
- d. Vitamins

ii. Lighter impurities that float on the surface of water in a sedimentation tank are called

- a. Sludge
- b. Scum
- c. Sewage
- d. Grit

iii.  $25^{\circ}\text{C}$  is equal to

- a.  $77^{\circ}\text{F}$
- b.  $87^{\circ}\text{F}$
- c.  $78^{\circ}\text{F}$
- d.  $76^{\circ}\text{F}$

iv. The salt used in photographic films

- a. Ammonium nitrate
- b. Silver nitrate
- c. Magnesium sulphate
- d. Sodium carbonate

v. Concave mirror forms

- a. Only real images
- b. Only virtual images
- c. Both real and virtual images
- d. Only virtual and inverted images

vi. The longest part of the human digestive system is the

- a. Stomach
- b. Small intestine
- c. Large intestine
- d. Oesophagus

vii. The normal pulse rate is

- a. 70 to 90 per minute.
- b. 70 to 80 per minute.
- c. 40 to 70 per minute.
- d. 70 to 100 per minute.

viii. Animal nutrition includes

- a. Nutrient requirements
- b. Mode of intake of food
- c. Utilization of food in body
- d. All of the above.

ix. The basic unit of speed is

- a. Km/ min
- b. m/ min
- c. Km/ sec
- d. m/ sec

x. If current does not flow through a circuit, then it is said to be an

- a. Open circuit
- b. Closed circuit
- c. Incomplete circuit
- d. Both a and c.

\*\*\*\*\*



*Barak*  
*Sw*  
13/12/18