

NEW AL WUROOD INTERNATIONAL SCHOOL, JEDDAH

(PEEVES GROUP OF SCHOOLS, K.S.A.)
Affiliated to CBSE – New Delhi.

SUMMATIVE ASSESSMENT- 2 (2016 -2017)

Subject: SCIENCE

Date: 05/03/2017

SET-A

Time: 2 ½ Hours

Class: 8 Sec: _____

Max. Marks: 80

Name: _____

Roll No. : _____

Instructions to the Candidates:

1. Please check that this question paper contains all the printed pages
2. All answers must be written in the provided answer sheet.
3. Read each question carefully and follow the instruction.
4. Do not write anything in the margin.
5. Do not exceed the prescribed word limit while answering the questions.
6. Do not split sections.

SECTION-A

I) Answer in a word or sentence:

(10 X 1=10)

1. What is meant by the term offspring?
2. In which female reproductive organ does the embryo get embedded?
3. Give two examples of situations in which applied force causes a change in the shape of an object.
4. Why Porters wear turbans when they have to carry heavy loads on their heads?
5. What is the audible range of frequencies for a normal human ear?
6. Name the instrument used to detect the electric charges.
7. What is refraction of light?
8. Define electrolysis.
9. Which vitamin keeps our eyes healthy?
10. List any one application of liquid pressure.

II) Answer the following

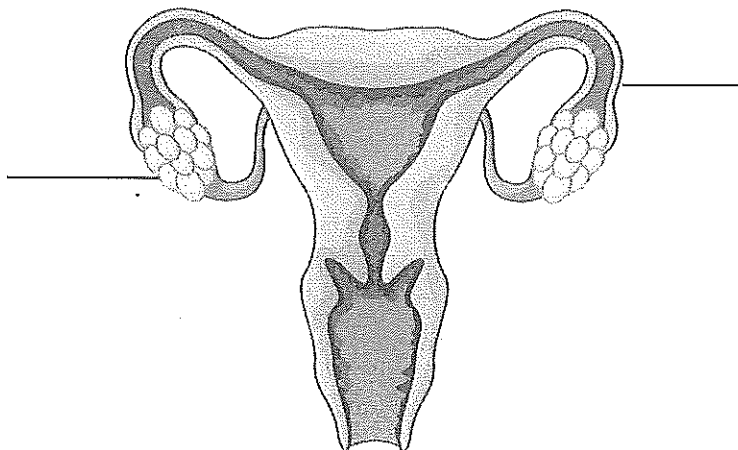
(10 x2 = 20)

11. Define asexual reproduction. Write any two methods of asexual reproduction.

12. In the following situation identify the agent exerting the force on the object on which it acts. State the effect of force.

- Squeezing a piece of lemon between the fingers to extract its juice.

13. Identify the part A and B. write the name of the reproductive system.



14. What does Pascal's law deal with? Give an example of its application.

15. Why does a drum sound differ from a guitar?

16. What is the difference between induction and conduction?

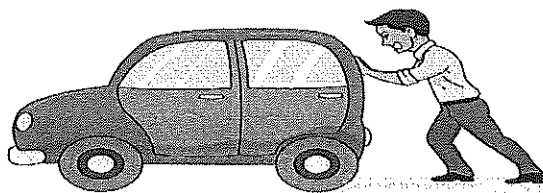
17. Classify the following liquid as conductors and non-conductors.

*Salt solution * vinegar *honey *oil *tap water * sugar solution * soap water

18. Explain why the pencil appears bent when immersed in water.

19. How is an embryo different from a foetus?

20. In the picture a boy is trying to push a car on plane surface. Do you think he will be able to push the car? Why?



III) Answer the following

(8x3=24)

21. What do you mean by metamorphosis? State any two advantages of metamorphosis.

22. What are the differences between sperm and ovum?

23. Explain why playing hockey is an example of muscular contact force.

24. List any three properties of liquids in relation to pressure.

25. Why does sound travel fastest through solids? Draw a diagram to explain it.

26. How can we prove that unlike charges attract each other?

27. Is it safe for the electrician to carry out electrical repairs outdoors during heavy rain?

Explain.

28. How many images will be formed when the mirrors are placed at the angle 90° , 60° and 45° ?

When were the images greater in number?

IV) Answer the following

(4x5=20)

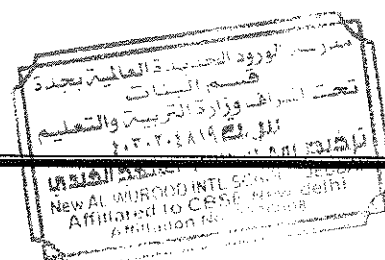
29. Rakhi and Rashmi are identical twins. They look exactly same. Explain how identical twins are born.
30. Draw a diagram to show how refraction splits white light in to seven colours.
31. i) What is earthing? Why is it important?
ii) Why is it necessary to provide earthing in tall building?
32. Why is noise pollution harmful to us? Suggest two measures to reduce noise pollution near your school area.

SECTION – B

V) Multiple choice questions:

(6x1=6)

1. The pressure of water at the bottom of the pond is _____ the surface of the pond.
a) Either lower or higher b) Same
c) Higher than d) Lower than
2. Which mode of reproduction involves two parents?
a) Asexual b) Sexual
c) Both a and b c) None of these
3. "Pure water is good conductor of electricity" This statement is
a) True b) False
c) Sometimes true c) Sometimes false
4. A charged balloon attaches to a wall because of _____.
a) Muscular force b) Gravitational force
c) Electrostatic force d) Magnetic force
5. The vocal cord in men is about _____ long
a) 20 mm b) 20 cm
c) 2 mm d) 2 m
6. How many images will be formed when two plane mirrors are placed parallel to each other?
a) Two b) One
c) Infinite d) Four



100

(

)