

# AL KHOZAMA INTERNATIONAL SCHOOL, DAMMAM

Affiliated to CBSE – New Delhi, Affiliation No. 5730008

TERM-3- March, 2022-23



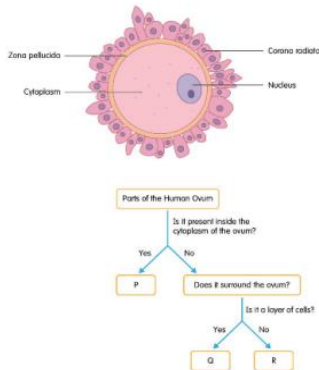
## WORKSHEET 1

GRADE: 8

SUBJECT: SCIENCE

### Choose the correct answer:

- 1) Methylated spirit burns with a spark when we try to light a wick dipped in it.  
What type of combustion is this?
  - a) Spontaneous
  - b) Slow
  - c) Rapid
  - d) Explosion
- 2) Choose all the correct zones of a flame in a candle.
  - a) Light zone
  - b) Dark zone
  - c) Luminous zone
  - d) Non-luminous zone
- 3) Look at the diagram of the ovum and the classification key. Choose the option with the correct labels for P, Q, and R.

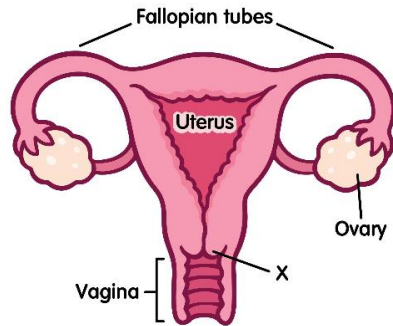


- a) P: Zona pellucida,
- b) P: Nucleus,
- c) P: Corona radiata,
- d) P: Nucleus,

- Q: Corona radiata,
- Q: Corona radiata,
- Q: Nucleus,
- Q: Zona pellucida,

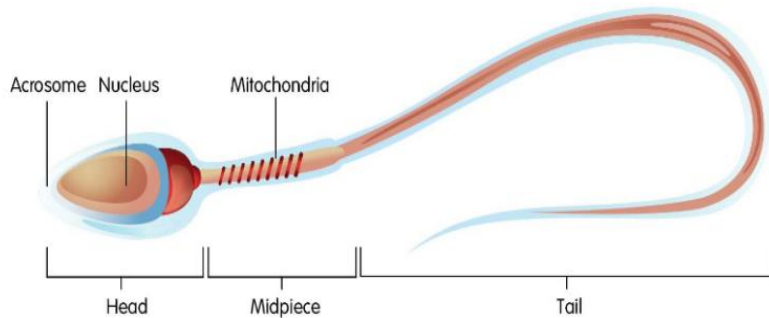
- R: Nucleus
- R: Zona pellucida
- R: Zona pellucida
- R: Corona radiate

4) Organ X in the female reproductive system has a blockage due to some abnormality. Choose what would happen because of this



- a) The ovaries will not produce ova.
- b) The ovum will not enter the fallopian tubes.
- c) The sperm will not reach the ovum.
- d) The ovum will not be released from the ovary.

5)



Choose if True or False.

- a) The nucleus in the sperm carries the genetic information of the mother.
- b) A sperm has 3 parts: head, midpiece and tail.
- c) The midpiece in the sperm contains mitochondria, nucleus, and acrosome.
- d) The tail of the sperm uses the energy produced by the mitochondria to move.

6) Match the following:

A	B
Head	Pushes the sperm for forward
Mid piece	Carries the genetic information of the father
Tail	Generates energy

7) Choose all the substances that will undergo slow combustion.

- a) Candle                      b) Kerosene                      c) Petrol                      d) Wood

**Assertion reason type questions.**

- (a) Both A and R are true and R is the correct explanation of A  
(b) Both A and R are true and R is not correct explanation of A  
(c) A is true but R is false.  
(d) A is false but R is true.

8) Assertion (A): Metals are sonorous.

Reason (R): They are generally brittle in the solid state, they break into pieces when hammered.

9) Assertion (A): Large number of mitochondria are present in the middle piece of sperm.

Reason (R): Numerous mitochondria in the middle piece of sperm produce energy which is required for their movement.

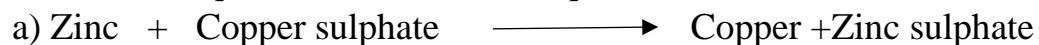
Answer the following questions:

10) Radha was trying to ignite the candle wick as it was wet. She was not successful. which condition for combustion was not fulfilled? Explain why you think so.

11) What type of chemical reaction is this? Give a reason for your answer.



12) Read the equation and answer the questions.



Explain the changes involved in this reaction.

b) Which metal is more reactive? Give reasons for your answer.

**CASE STUDY:**

13) Any chemical reaction in which heat and light are evolved is called combustion. It is a chemical process in which substances react with oxygen in the air to produce energy. Burning of matchsticks, dry leaves, magnesium ribbon, coal and LPG are all examples of combustion.

1) What are the conditions necessary for combustion to take place?

2) Give two examples of combustible and non-combustible substances.

# AL KHOZAMA INTERNATIONAL SCHOOL, DAMMAM

Affiliated to CBSE – New Delhi, Affiliation No. 5730008

TERM-3- March, 2022-23



## WORKSHEET-2

GRADE: 8

SUBJECT: SCIENCE

---

### Choose the correct answer:

- 1) The part of the ear that vibrates on receiving sound waves from external ear  
(a) Cochlea      (b) Optic nerve      (c) Ear drum      (d) Pinna
  
- 2) The sound waves travel fastest in  
(a) Solid      (b) Liquid      (c) Gel      (d) Gas
  
- 3) Sound cannot travel through  
(a) Air      (b) Water      (c) Vacuum      (d) Steel
  
- 4) Which of the following musical instrument is different from others?  
(a) Veena      (b) Guitar      (c) Flute      (d) Sitar
  
- 5) Periodic vibrations produce  
(a) Noise      (b) Music      (c) Both      (d) None

### Fill in the blanks:

- 6) Humans can hear sounds that have a frequency more than \_\_\_\_\_ Hz.
- 7) Sound is produced when something \_\_\_\_\_.

- 8) The \_\_\_\_\_ propagates but the particles of the medium vibrate about a mean position.
- 9) Speed of sound in air is \_\_\_\_\_.
- 10) The unit of frequency is \_\_\_\_\_.

**Assertion reason type questions:**

- (a) Both A and R are true and R is the correct explanation of A
- (b) Both A and R are true and R is not correct explanation of A
- (c) A is true but R is false.
- (d) A is false but R is true.
- 11) Assertion: Sound wave travels as alternate rarefaction and compression.  
Reason: Sound wave needs material medium to propagate.
- 12) Assertion: Two people cannot talk to each other on the moon.  
Reason: There is no medium on the moon.
- 13) Assertion: Stethoscope is a medical instrument used for listening to sounds produced within the body, mainly in the heart or lungs.  
Reason: In the stethoscope the sound of the patient's heartbeat reaches the doctor's ears by multiple reflections of sound.

**Answer the following questions:**

- 14) List the factors effecting the speed of sound. Through which medium is the speed of sound more and through which medium is the speed of sound the less.
- 15) Why sound waves are called longitudinal waves?
- 16) List the conditions for hearing an echo.
- 17) Differentiate between infrasonic and ultrasonic sounds.

18) What is seismograph? What is it used for?

19) Differentiate between pitch and loudness.

**CASE STUDY:**

20) The 2001 Gujarat earthquake, also known as the Bhuj earthquake, occurred on 26<sup>th</sup> January at 8:46 am IST and continued for 2 minutes and the measuring of the Richter scale is 6.9. The epicenter was about 9 km south-west of the village of Chobari in Bhachau Taluka of Kutch district of Gujarat, India.

- 1) How is an earthquake caused?
- 2) What is epicenter?
- 3) Write any 4 preventions and precautions that should be taken during an earthquake.

XXXXXXXXXXXXXXXXXXXXXXXXXXXX