



**WORKSHEET -1**

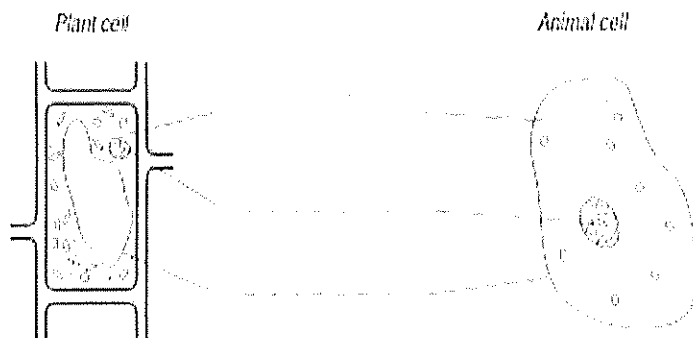
**ANNUAL EXAM 2017-18**

**Class : VIII**

**Subject : Science**

**[BLOCKS-1, 7, 8, 10,16,18,19,22,24,26 & 27]**

1. Name the different irrigation methods used for growing the following crops
  - i. Soya bean
  - ii. Paddy fields
2. Wires cannot be drawn from materials such as stone or wood. Why?
3. If you are an engineer constructing a multi-storey building, which alloy would you be extensively using and why?
4. How are prokaryotes different from eukaryotes?
5. Label the parts which are common to plant cell and animal cell.



6. Write the functions of following Organelles:
  - i. Mitochondria.
  - ii. Endoplasmic reticulum
  - iii. Ribosomes.
7. What happens in the female body if the ovum is not fertilized by a sperm.
8. Draw a flow chart to show the stages of the menstrual cycle.
9. Why is Lignite coal brown in color while Bituminous coal is black?
10. Why do deep sea divers or high altitude fliers wear special suits?
11. An elephant of mass 20000N and foot area of 250cm<sup>2</sup> is standing on the floor. Find the pressure exerted by the elephant on the floor.

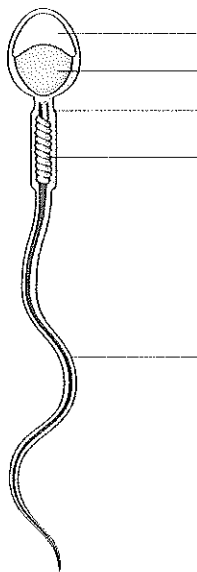


12. Why does the vision of a person become blurred?  
 13. What will happen if two differently charged electroscopes are connected by a wire?  
 14. Why is it necessary to provide Earthing in tall buildings?
15. Classify the following as Electrolytes and Non-Electrolytes:  
 Sugar solution, Tap water, Salt water, Dilute Hydrochloric acid, Petrol, Glucose solution.

16. Complete the following table

Angle between mirrors	Number of images formed
$60^\circ$	-----
-----	11

17. A fish in water appears to be raised or closer to the surface of water. Give reason.  
 18.
- i. Define Electroplating.
  - ii. Show the electroplating of a metal spoon with copper with a neat labeled diagram
- 19.
- i. State Pascal's Law.
  - ii. With a neat diagram explain the working of Hydraulic press.
20. Study the following figure and answer the questions given below.



- i. Identify and name the cell.
  - ii. Label the parts.
  - iii. Write any one function for any of the two parts.
-

مدرسة الورود الدولية الخاصة بجدة  
قسم البنات  
تحت إشراف وزارة التربية والتعليم  
رقم الترخيص: ٥٧٣٠٠٠٨  
New AL WUROOD INTL SCHOOL-JEDDAH  
Affiliated to CRSE New delhi  
Affiliation No. 5730008

*Handwritten signature*  
11/2/18