

AL KHOZAMA INTERNATIONAL SCHOOL, DAMMAM

Affiliated to CBSE – New Delhi, Affiliation No. 5730008



TERM-3 - March 2022-23

WORKSHEET -I

GRADE:6

SUBJECT: SCIENCE

I Multiple Choice Questions

1. An electric machine has different parts made up of lead, copper, silicon, carbon, plastic, and rubber. How many metals are used?
A. 2 B. 3 C. 4 D.
2. Tick the elements and cross the compounds.
A. HCl () B. N₂ () C. CH₄ () D. NaOH () E. O₂
3. Butter is separated from milk by
A. sedimentation
B filtration
C churning
D decantation

The process of conversion of water vapors into liquid is called.

- A condensation
- B decantation
- C sedimentation
- D evaporation

II. Fill in the blanks

3. Atoms can be obtained by _____ (compressing/breaking down) matter.
4. Components retain their properties in a

III True or False

5. Most atoms can be seen by the naked eye.
6. Different elements are made up of different types of atoms.

IV Answer the following Questions.

7. Which of these mixtures can be separated by filtration?

a). Coffee and milk b). Flour and water

8. Name the combination of methods that can be used to separate these mixtures.

A. Iron filings, flour, and water B. Salt, sand, and water

9. Write one way you can use these separation methods in your kitchen?

a) Filtration b) Centrifugation

10. Write one soluble and insoluble compound in each mixture

a) Milkshake with strawberry chunks and Sugar

b) Tomato curry with black berry and Salt

11. write these chemical changes are desirable or undesirable. Give one reason for each.

a) Tarnishing of copper

b) Fungus on Bread

12. A few kidney beans are boiled (not fully) in a large pot of water. The kidney beans settle at the bottom. Which method can be used to separate them from water and how?

13. Why is a mixture of salt and water considered to be an impure substance? Give 2 reasons.

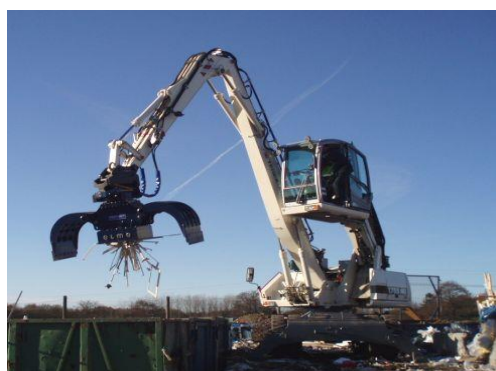
14.. Differentiate between Sulphur and gold on the basis of these properties.

Properties	Sulphur	Gold
Sonorosity		
Luster		
Ductility		
Electrical Conductivity		

15. A cup of coffee is an example of a mixture. justify this statement.

16. Air is a mixture of gases, some elements, and some compounds. Name two elements and two compounds present in Air.

17.. Which type of separation is shown in the following figure? Explain.



AL KHOZAMA INTERNATIONAL SCHOOL, DAMMAM

Affiliated to CBSE – New Delhi, Affiliation No. 5730008

TERM-3 - March 2022-23



WORKSHEET -2

GRADE:6

SUBJECT: SCIENCE

I Multiple Choice questions.

- is not an example of chemical change.
 - Burning of paper
 - Melting of wax
 - Ripening of mango
 - Cooking of food
- Which of the following is an example of non-periodic change?
 - Floods
 - Motion of a swing
 - Movement of a pendulum
 - Formation of day and night

II Fill in the Blanks:

- Many materials expand on being
- On being heated, a gas expands than a solid does.
- Periodic changes occur after regular
- The design made by the veins in a leaf is called the _____.
- The process of leaves absorbing Water and carbon dioxide from the air to produce is called

III State True or False:

- Every change has some cause.
- Gases contract on cooling.
- Cooking of rice is a physical change.
- The design made by the veins in a leaf is called the _____.
- The process of leaves absorbing Water and carbon dioxide from the air to produce is called _____.

IV Answer the following.

13. You accidentally dropped your favourite toy and broke it. This is a change you did not want. Can this change be reversed?

14. Give 1 example of each.

A. Slow and nonperiodic change

B. Fast and desirable change.

15. Is the making of coffee a reversible or an irreversible change? Why?

16. Write 2 physical changes that take place in the school.

17. Write the difference between respiration and photosynthesis based on the given criteria.

a) Intake of gases b) Use/Formation of glucose.

18. Ananya took two similar plants and marked them P and R. She put plant P in the sun and plant R in the shade, how will the rate of transpiration differ in the two plants, if other factors remain the same? Give a reason to support your answer.

19. Draw a Labelled diagram to show how stomata open during day and close at night.

20. Pine trees, which are mostly seen in hilly areas, have needle-like leaves. How do these leaves help the trees?

21 Identify the given types of motion.

A.

B.

C.

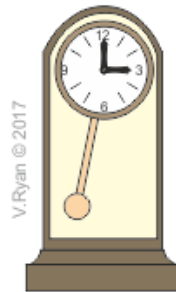
D.



BICYCLE WHEEL



PISTON



PENDULUM CLOCK



LOCOMOTIVE